

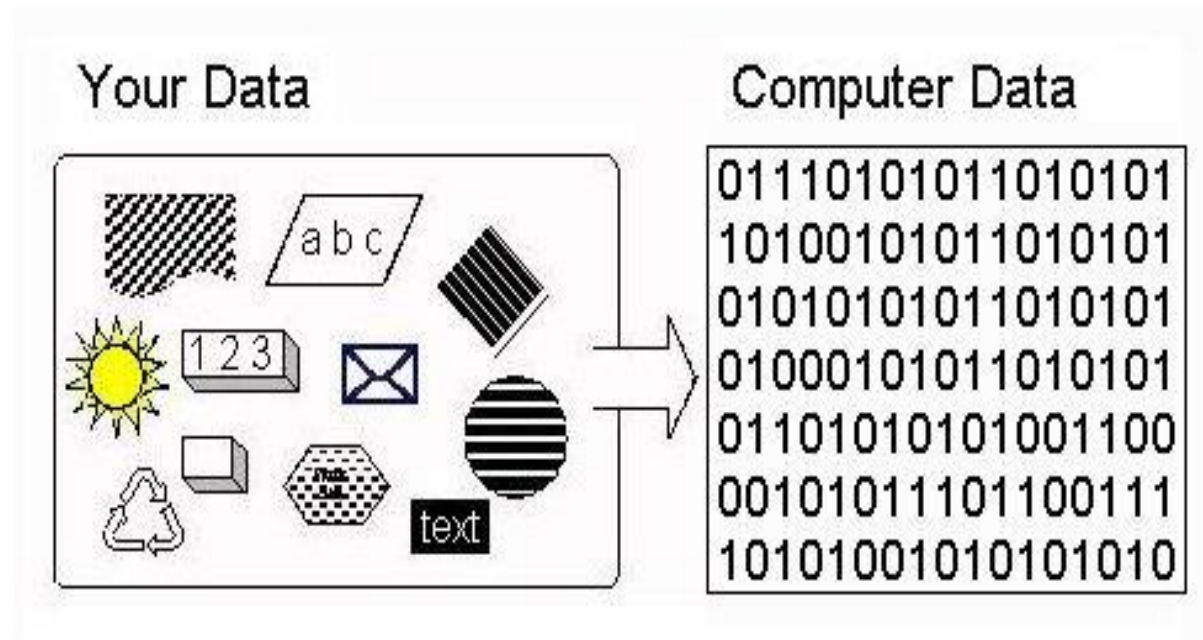
Backup Your Data

2025 Edition

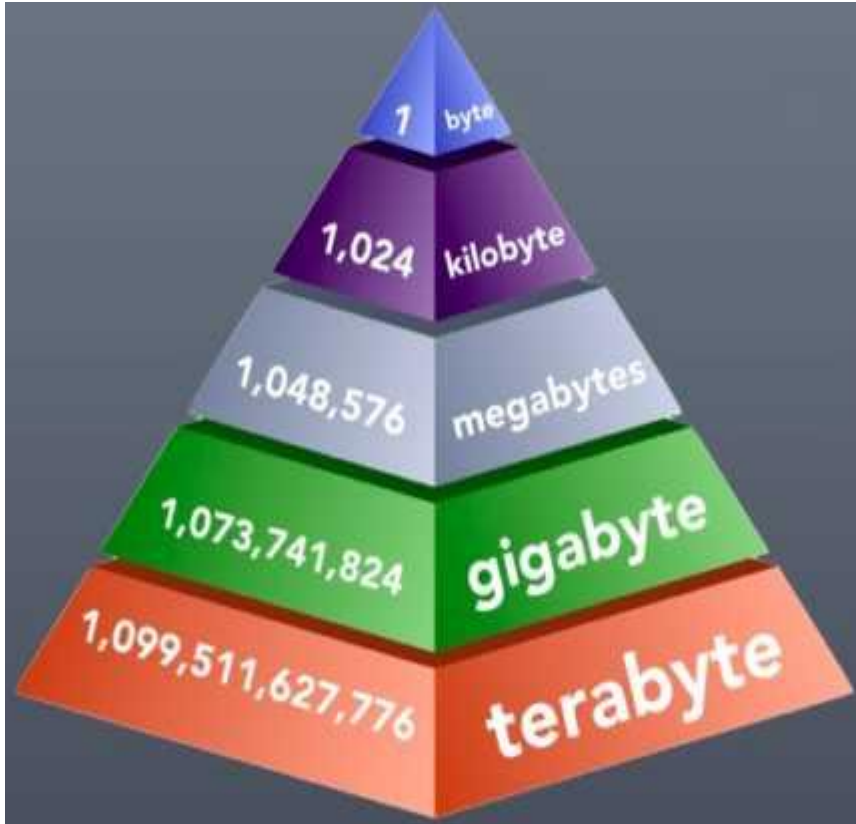
All data on a computer is a bunch of 1s & 0s.

Each independent 0 or 1 is called a bit.

A combination of eight 0s & 1s is called a byte.



Understanding Bytes



Data conversion

There are conversion calculators to help.

A bit is numerical 0 or 1

8 bits = 1 byte

1024 bytes is 1 KB

Kilobyte **KB**

Megabyte **MB**

Gigabyte **GB**

Terabyte **TB**

Capital case “ B ” for Bytes

Lower case “ b ” for bite



SanDisk 4TB Extreme PRO Portable SSD - Up to 2000MB/s - USB-C, USB 3.2 Gen 2x2, IP65 Water and Dust Resistance, Updated Firmware - **External Solid State Drive** - SDSSDE81-4T00-G25

4.4 ★★★★★ (15.7K)

3K+ bought in past month

\$314⁹⁹

FREE delivery **Sat, Nov 8**

Or fastest delivery **Tomorrow, Nov 4**

Add to cart

More Buying Choices

\$282.83 (34+ used & new offers)



Con: Data Leaking

HIGH cost
per gigabyte

Best for active use
programs and files.



WD 2TB Elements Portable External Hard Drive for Windows, USB 3.2 Gen 1/USB 3.0 for PC & Mac, Plug and Play Ready - WDBU6Y0020BBK-WESN

4.6 ★★★★★ (332.2K)

7K+ bought in past month

\$69⁹⁹ List: \$79.99

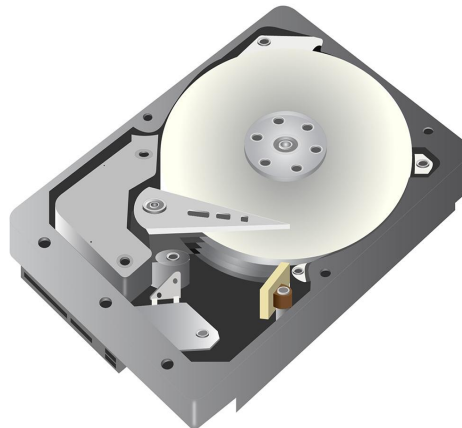
FREE delivery **Sat, Nov 8**

Or fastest delivery **Tomorrow, Nov 4**

Add to cart

More Buying Choices

\$60.68 (21+ used & new offers)



LOWER cost
per gigabyte

Best for mass storage.

BUYING A NEW STORAGE DRIVE

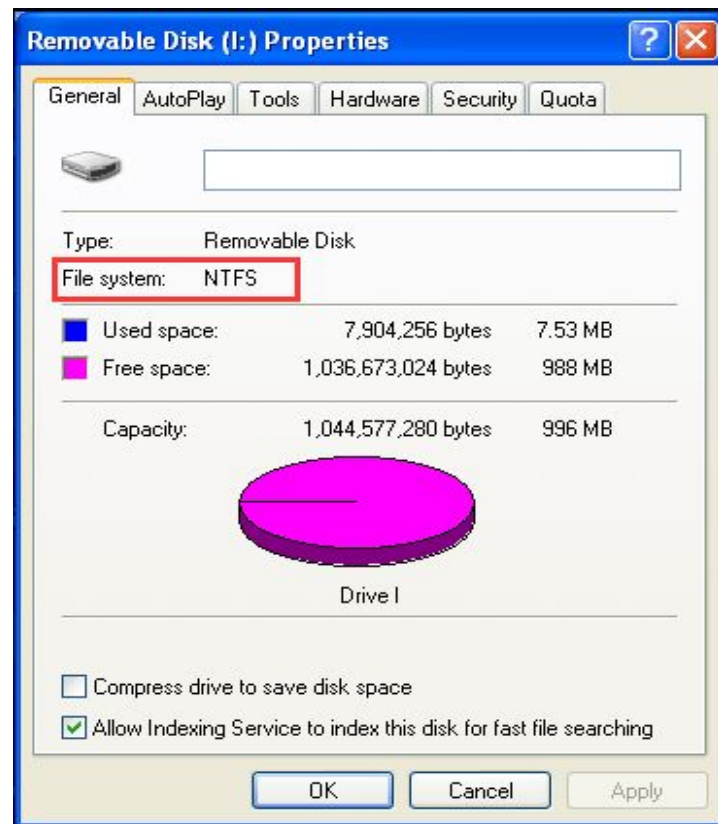
**Universal compatibility with
PCs and Mac computers.**



- Universal compatibility with PCs and Mac computers.
- Compatibilité universelle avec les ordinateurs PC et Mac.

- Up to 2-meter drop protection with no moving parts for added

NTFS - New Technology File System





Apple File System = AFS



iMac

File Allocation Table (FAT)

FAT32

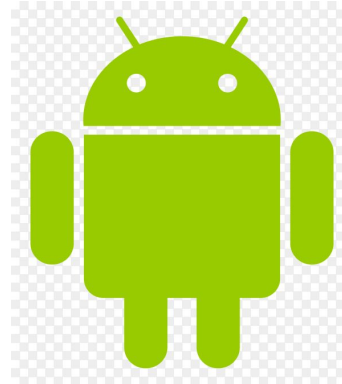
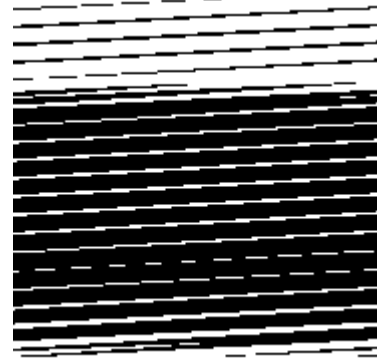
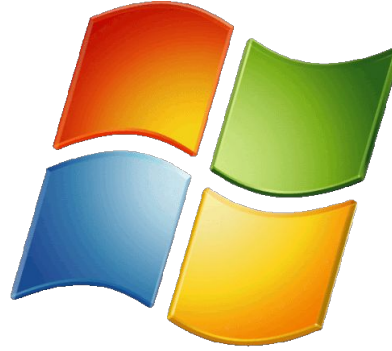
MAX file size of 4GB

Max partition size of 8TB

exFAT (Extended File Allocation Table)

exFAT limit of 128 petabytes

MAX partition size of 128 PB





MAC
Use AFS or exFAT



Windows
Use NTFS or exFAT



Flash Drives / Thumb Drives / USBs

DO NOT USE A USB DRIVE FOR YOUR MAIN BACKUP

- Prone to failure
 - USB drives are flash memory and have a shorter lifespan.
- Easy to lose
- Corruption: Data can be corrupted if the drive is removed without being properly ejected from a computer.
- Limited write cycles: Has a finite number of write/erase cycles meaning the drive will eventually wear out after extensive use.
- Vulnerability: Susceptible to physical damage more easily.

Two Types of DATA Backups

1. Your Files

- Unique to your computer.
- Hard to access with no operating system

2. The Operating System

- Used to access your files.

Different Types of Backups

Full Backup - aka System Image

A **complete copy** of all selected data.

Takes longest to create, requires the most storage space.

Incremental Backup -

Copies only the data that has **changed since** the **last backup**.

Differential Backup

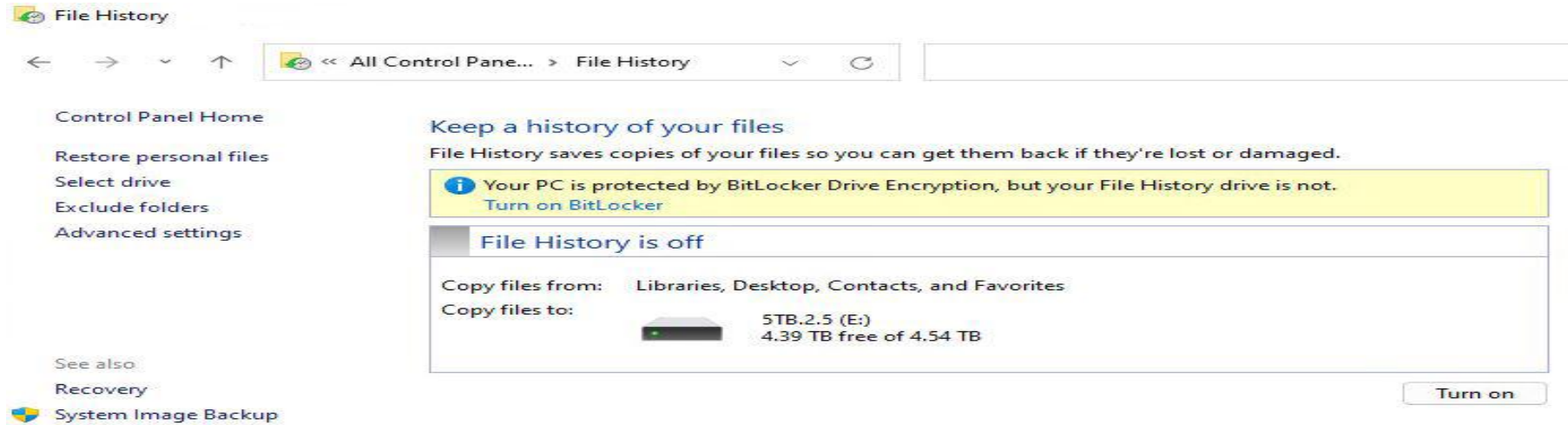
Copies **all** data that has changed since the last **full backup**.

<https://www.nakivo.com/blog/backup-types-explained/>

Backup Windows



Windows File History



Ask Leo!

<https://www.youtube.com/watch?v=DpEH09he-Rw>

ZacsTech

<https://www.youtube.com/watch?v=oUDw5m3QpZY>

Creating a Windows Recovery Image

1. Go to Start > Settings > Update & Security > Backup.
2. Click on "Go to Backup and Restore (Windows 7)".
3. Click "Create a system image" on the left-hand side.
4. Choose a location to save your backup, such as an external hard drive or a network location.
5. Select the drives you want to include in the backup. By default, Windows includes the drives required to run Windows.

https://www.youtube.com/watch?v=M_yFnJ8PmKA&t=6s

Best match



Create a recovery drive

Control panel



Search the web

- 🔍 create a reco - See web results >
- 🔍 create a recovery drive >
- 🔍 create a recovery drive windows 10 >
- 🔍 create a recovery usb port >
- 🔍 create a recovery usb >
- 🔍 create a recovery drive on usb windows 10 >
- 🔍 create a recoo >
- 🔍 create a recovery disk 10 >



Create a recovery drive

Control panel



Open



create a recovery drive

Windows Recovery Environment

Choose an option



Continue

Exit and continue to Windows 10



Use a device

Use a USB drive, network connection,
or Windows recovery DVD



Troubleshoot

Reset your PC or see advanced options

is a toolset included with Windows that helps troubleshoot and fix computer problems when the system won't start normally. It provides access to tools like [Automatic Repair](#), [System Restore](#), and [Push-button reset](#) to help you repair your PC or restore it to a previous state.

← Advanced options



Start-up Repair

Fix problems that keep Windows from loading



Uninstall Updates

Remove recently installed quality or feature updates from Windows



Start-up Settings

Change Windows' start-up behaviour



System Restore

Use a restore point recorded on your PC to restore Windows



Command Prompt

Use the Command Prompt for advanced troubleshooting



System Image Recovery

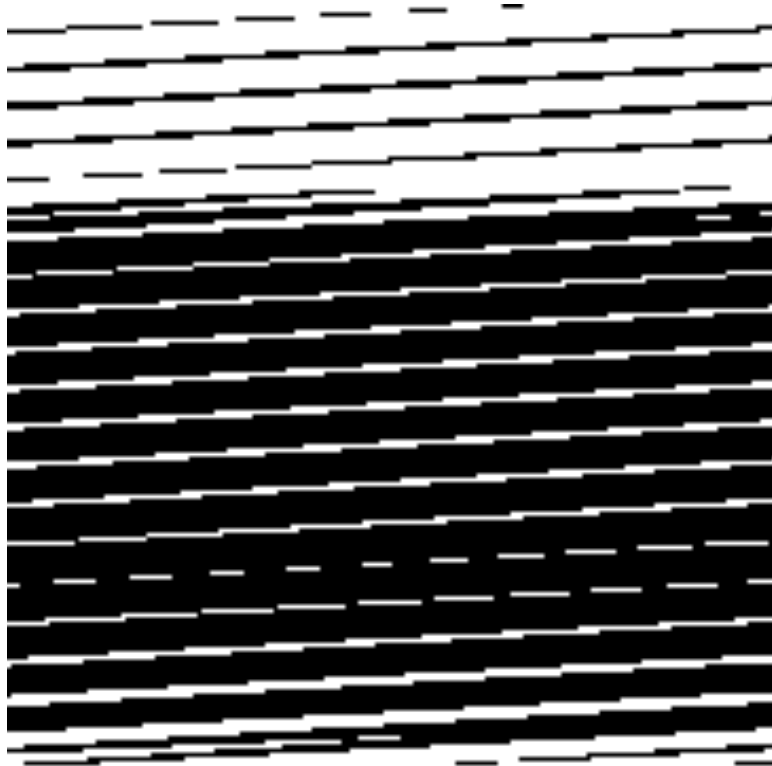
Recover Windows using a specific system image file

Access Windows Recovery Environment (WinRE) If Windows is broken.

Using a bootable USB drive

- Connect the Windows recovery or installation media (USB drive) to your computer.
- Turn on your computer and repeatedly press the key to access the boot menu, which is often F12 but can vary (check your manufacturer's documentation, or try F2, F10, or Esc).
- From the boot menu, select your USB drive and press Enter.
- Once the recovery media loads, select Troubleshoot to access the recovery options.

How to backup mac OS





https://www.youtube.com/watch?v=A74Q5_YHvHU
<https://support.apple.com/guide/mac-help/view-and-restore-past-versions-of-documents-mh40710/mac>

Backup Mac

How to use macOS Recovery

- Start your Mac: Turn on your Mac and immediately press and hold the correct key combination. You can find the specific combination for your Mac model by going to Apple menu > About This Mac to check if it has Apple silicon (a chip) or an Intel processor.
- **Access macOS Recovery:**
 - On Apple silicon: Press and hold the power button until you see the startup options, then click Options and Continue.
 - On Intel-based Macs: Press and hold Command-R immediately after turning on your Mac until you see the Apple logo or a spinning globe.

MAC OS

RECOVERY

Restore from Time Machine

Reinstall macOS

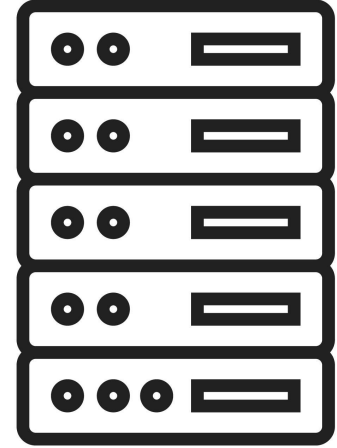
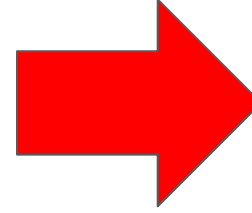
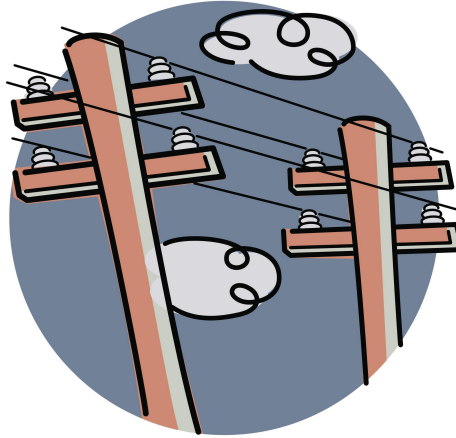
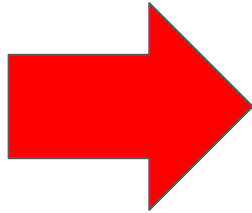
- Reinstalls the previous OS on top of the old OS.

Disk Utility

- Repair or erase a disk using the Disk Utility tool.



“ the Cloud, ” is really about using someone else’s computers to handle your data or provide services for you.



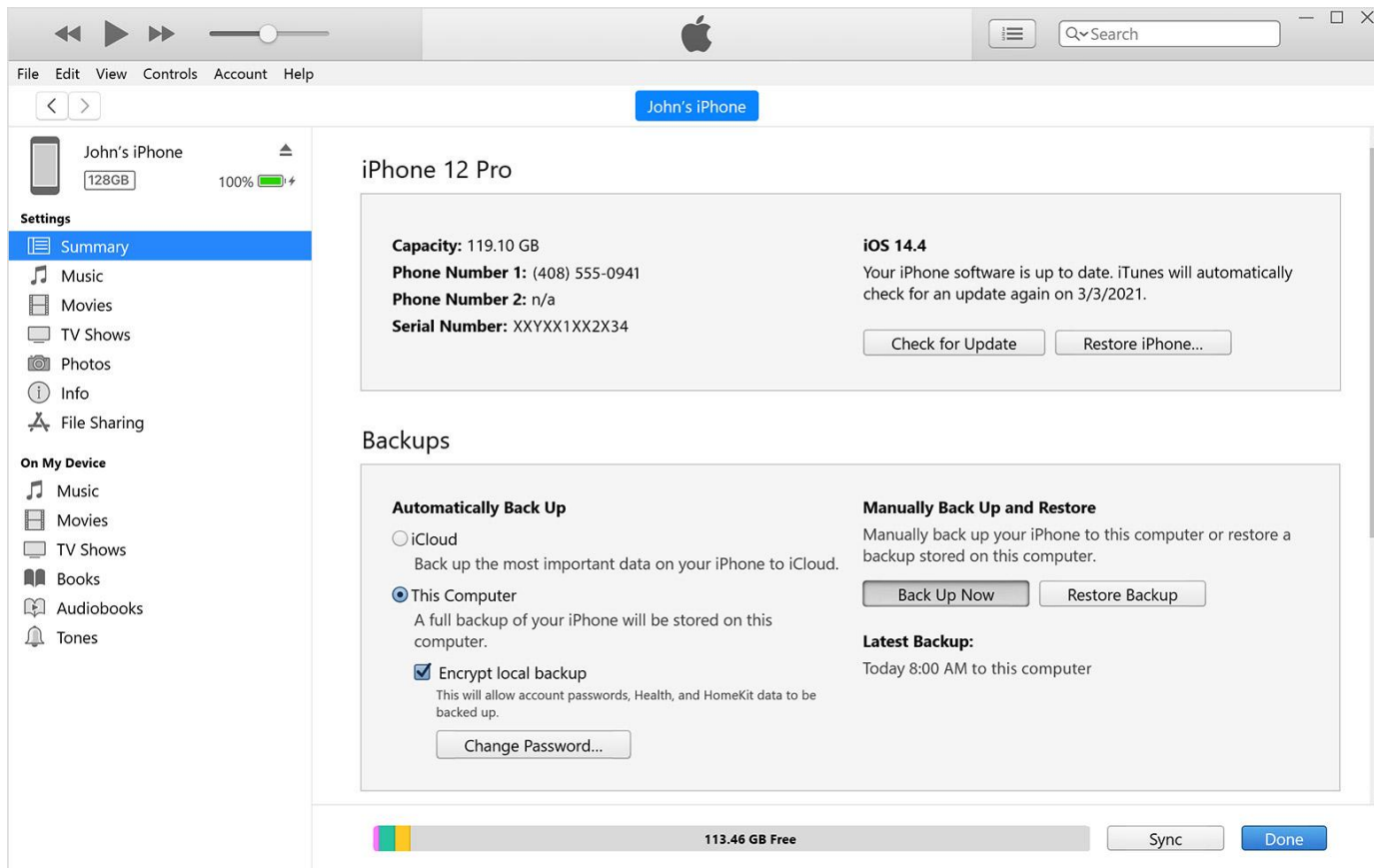
All cloud services will require a login and password to gain access



iPhone & iPad



iTunes for Windows Desktop / macOS Desktop



<https://support.apple.com/en-us/108366>

– icloud backup

<https://www.pcmag.com/how-to/how-to-make-sure-icloud-is-backing-up-syncing-your-data>

- How to sync your data

Offers a full image backup to the cloud.

Includes the benefit of automatically share files between multiple Apple devices.





Files App

To manage files on an iPhone, use the Files app to browse, organize, and manipulate files across different locations like iCloud Drive and "On My iPhone".



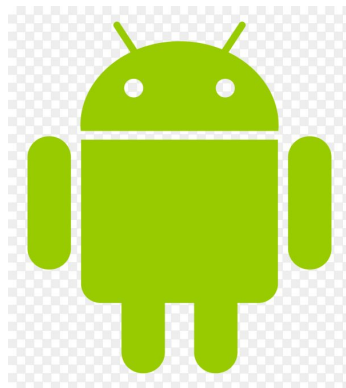
You can organize files by creating folders, moving or copying them, renaming them, and compressing them into ZIP archives.

Flash Drive to iPhone

https://www.youtube.com/watch?v=C-pOPt_Dvbl



Android Backup





Back up your device



Choose data to back up in case your device is lost, stolen, or damaged. Your backup uses your Google Account storage. [How your data is protected](#)



Photos & videos

Automatically back up to Google Photos so you can view, share, and search



Other device data

Contacts, call history, device settings, apps & app data, SMS & MMS messages, and SIMs



Cancel

Confirm



Backup status

Photos & videos

Backup is on



Other device data

Backup is on



Manage backup



Backup



Account storage

13 GB of 2.0 TB (1%) used

Manage storage



Backup by Google One

Pixel 6a • No data backed up



Back up now

Your device backs up automatically over Wi-Fi after it's been idle and charging for 2 hours

Backup details



Apps

No data backed up



Photos & videos

Waiting to back up...



SMS & MMS messages

No data backed up

Transfer data using to USB Drive



<https://www.youtube.com/watch?v=iiJbOn6Zgj4>